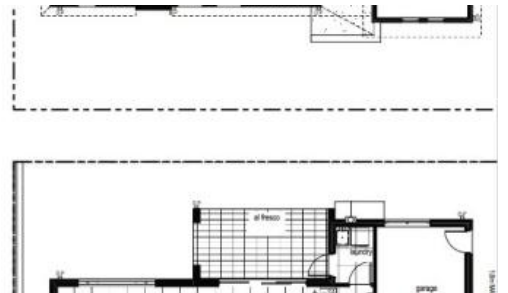


Sold



Lot 3 178 Riverstone Road, Riverstone



Attention 1st home buyers!

Attention First Time Home Buyers - The New First Home Buyers Assistance Scheme came into operation on 1st July, 2017, which benefits you with a stamp duty concession of \$12,365!

Future-proof yourself, knowing that the new 17% increase in electricity prices can be dramatically reduced by using the solar energy in this stunning new home.

Nestled in a beautifully tranquil pocket of Riverstone, this stunning double storey eco friendly home is located conveniently close to schools, shopping, sporting facilities and transport - Riverstone railway station, the upcoming North West Rail Link and T-way transport to the City and Parramatta.

The accommodation comprises:

- Generous living/dining
- State of the art kitchen with stylish Miele appliances, including microwave and dishwasher
- Superior bathrooms showcasing Villeroy & Boch toilet suites and vanities and Grohe tapware
- Ground floor powder room
- Single garage
- Alfresco for all year round entertaining
- Spacious master suite with fully fitted walk-in-robe and ensuite
- Bedroom 2 has fully fitted walk-in-robe

🛏 3 🌞 2 🚗 1 📏 225m²

Price	SOLD
Property Type	Residential
Property ID	556
Land Area	225 m ²
Floor Area	168.16 m ²

Agent Details

Abdul Khan - 1800 400 090

Office Details

Kellyville
12-14 Solent Cct, Bella Vista Unit B7
Bella Vista, NSW, 2153 Australia
1800 983 700



Included are energy saving solutions for greater comfort in summer and winter, together with substantially reduced energy bills - solar energy, argon gas-filled double glazing to windows and extensive insulation. An added bonus is the CBus home automation system with the ability to remotely access your lighting and to personalise your requirements further.

This property offers a beautiful place to come home to.

Please contact Sue Kelly on 1800 400 090 for information or for a private appointment.

Open home inspections will be held on Saturday and Sunday at 10am-11am - please look for the "Open" sign on the corner of 178 Riverstone Road and Schembri Street and follow the arrow down Schembri Street.

* All drawings, images and photographs are for illustrative purposes and should be used as a visual guide only. Floor plans are for marketing purposes only. Please note that changes can be made in accordance with the provisions of the sales contract. For full details of provisions and inclusions please refer to the contract of sale which takes precedent over this document.

The above information provided has been furnished to us by the vendor/s. We have not verified whether or not that information is accurate and do not have any belief in one way or the other in its accuracy. We do not accept any responsibility to any person for its accuracy and do no more than pass it on. All interested parties should make and rely upon their own inquiries in order to determine whether or not this information is in fact accurate.